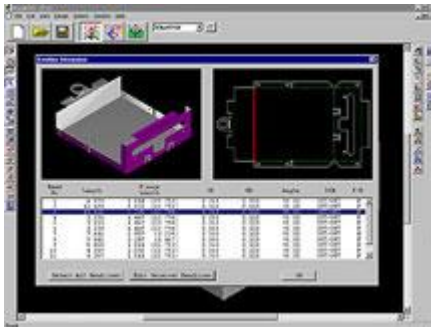




Metcam News

Metcam Adds Amada BendCAD and Pressbrake (Item updated 10/04/00)



Metcam has been selected by Amada to alpha test its new integrated sheet metal CAD/CAM software solution, called BendCad. The software is designed to expedite the process for developing CAD/CAM, inspection layout, nesting, and bending programs. The system is network based, linking CAD/CAM stations, file servers, turrets, lasers and press brakes.



Metcam has now purchased, installed and is using the first version of the new software, in conjunction with a new Amada Pressbrake. The FBD8025-NT is an 88 ton, up-acting hydraulic press brake with a bed length of 8 feet and ram repeatability of ± 0.0004 ". BendCAD/CAM, Amada's offline simulation and programming software for press brakes allow for the generation of programs and set-up data external to the press brake. This translates into less time setting up the press brake and more time running production.